



 invicon



stonelux 2.0

Repair redefined

New ideas for better repairs

- Module concept
Professional, Compacc, Ceramics
- ConneX case-click-system
All in one hand
- Repair module: ceramics
13 repair pastes suitable for natural stone, engineered stone, sinter ceramics, tiles and sanitary ceramics
- blue:tron
high-performance light curing unit
- Dual primer system
Primer Universal I Primer Granit





stonelux 2.0

the modules

Professional – the full repair system



- 9 coloured repair pastes
in 3ml | 2ml application syringes for immediate use without
prior mixing
- XL filler material in 30ml cartridges
for large and deep defects; including applicator
- Dual primer system
highly efficient bonding agents "Universal" + "Granit "
- Sealer
effective sealing of micro-cracks and hairline cracks
- X2-X3 structural crystals
to imitate natural crystal effects.
2 crystal sizes in 3 colours

Professional – the full repair system



- blue:tron performance curing light
speedcuring in just 15 seconds
- High gloss polishing paste
for quick polishing results and higher polishing levels
- Bellows
for easy dust removal
- Fine grinding pads
with graduated grits 400 | 800 | 1500 | 3000
- Battery fine grinder
optional - for efficient damage preparation in Proxxon
professional quality
- High performance milling tools
Diamond- coated preparation instruments in 4 geometries

Compacc – inexpensive and expert repair



- 3 coloured repair pastes in 3ml | 2ml application syringes for direct use without prior mixing
- Dual primer system highly efficient bonding agents "Universal" + "Granit "
- X2 structural crystals to imitate natural crystal effects – available in 3 colours

- blue:tron performance curing light speed curing in just 15 seconds
- Fine grinding pads with graduated grits 400 | 800 | 1500 | 3000
- High gloss polishing paste for quick polishing results and higher polishing levels

Ceramics –

Efficient repair of sinter ceramics, engineered stones, quartz composites, tiles, sanitary ceramics



- Air Barrier Gel
to achieve glossy repair surfaces without grinding and polishing
- High performance milling tools
Diamond-sintered preparation instruments in 4 geometries
- Separator pen
for the repair of structured surfaces



- 13 x coloured repair pastes
in 2ml syringes matching the common ceramic and engineered stone urfaces
- 1 x Sanitary repair paste
in 2ml syringes matching the standard alpine white colour surface
- X4 Macro structural crystals
to imitate natural crystal effects – available in 3 colours
- 1 x Opaque white
for neutralising colour-intensive substrates



blue:tron

performance curing light

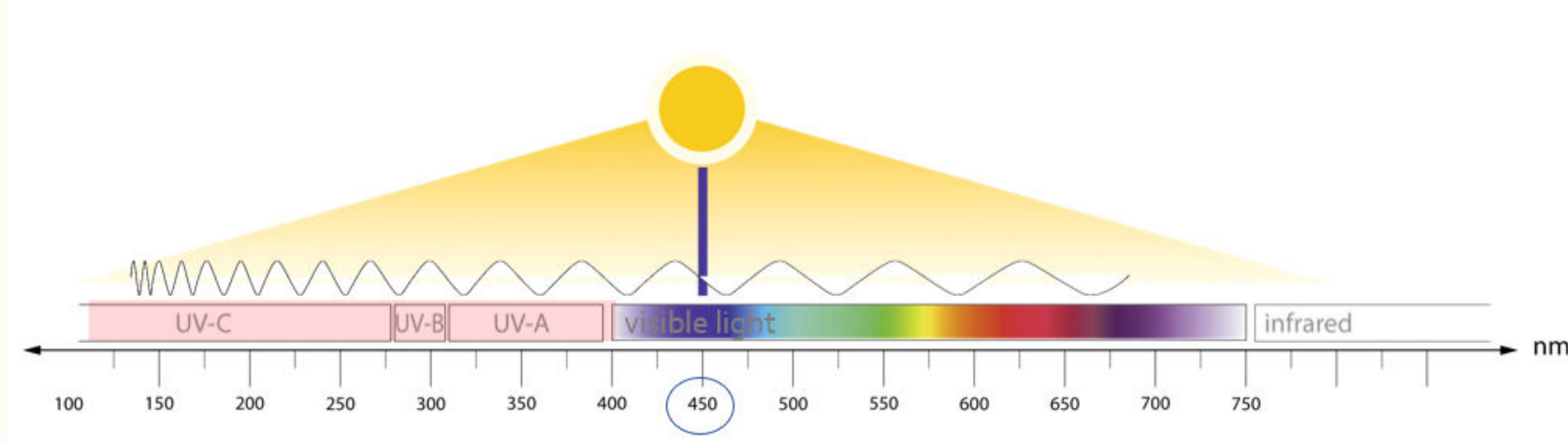
invicon

blue:tron – performance curing light



- Soft-edge device design
comfortable and ergonomic working
- OLED display
simple, functional menu navigation and good readability even
in bright ambient light
- Display function keys
simple control of all unit
- 3 x Battery packs
High light power and long working hours
- 3 x Blue light LED's
powerful blue light LEDs for speed curing in seconds
- USB port
online diagnostics and function updates

blue:tron – cures at 450nm



Advantages

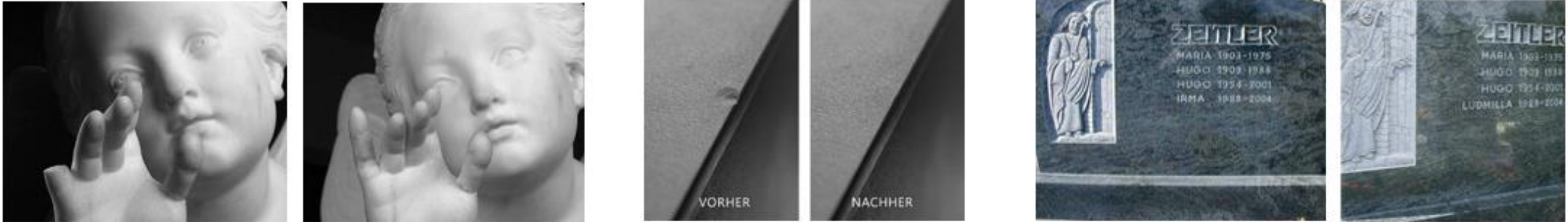
- Precise and fast curing (15sec)
- Low retina glare risk
- Greater material curing depths





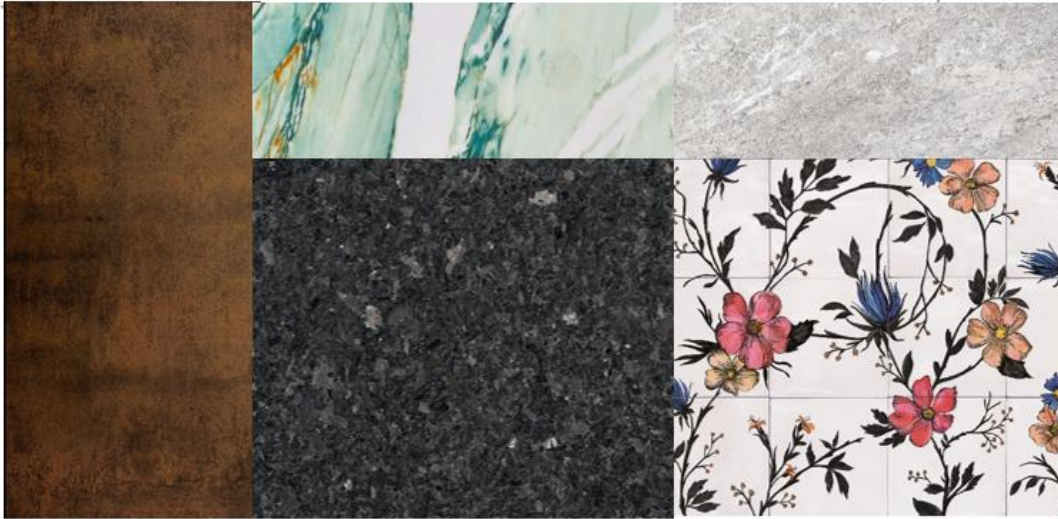
Repair

Advantages



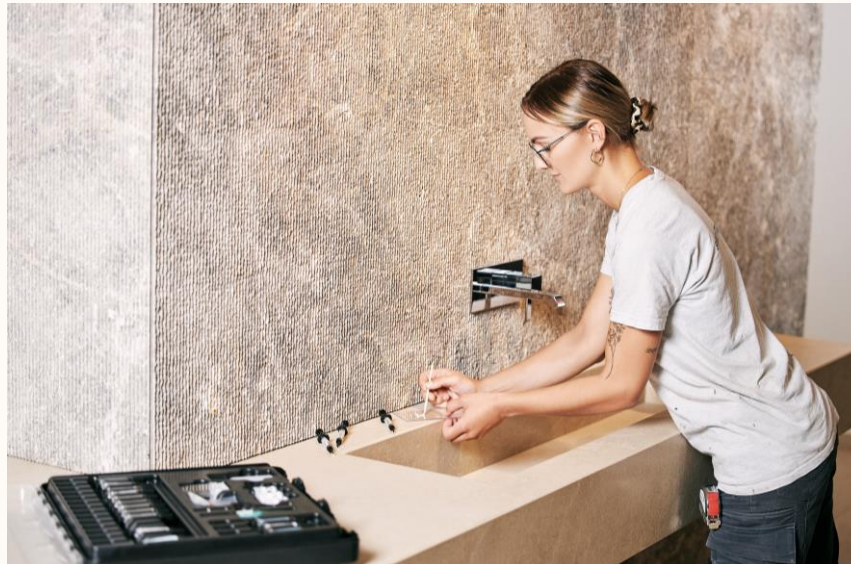
- Invisible repairs
5 practical repair techniques and 23 preset repair colours
- Colour stable repairs
hardly any colour change due to UV radiation temperature fluctuations from -20°C to +120°C or humidity
- Efficient repair processes
blue:tron speed curing and coordinated professional repair tools
- Durable polishable repairs
with fine grinding pads and highly effective polishing paste
- Repair of textured surfaces
with innovative StoneLux 2.0 stamping technology
- High and durable bond strength
of 5 N/mm² of the stoneLux repair to the stone surface
- Distinctive compressive strength of the repair
of 260 N/mm already immediately after curing

Fields of application



- Granite
- Marble
- Quartz Composite
- Sinter Ceramics
- Tiles & Slabs
- Sanitary Ceramics
- Stoneware

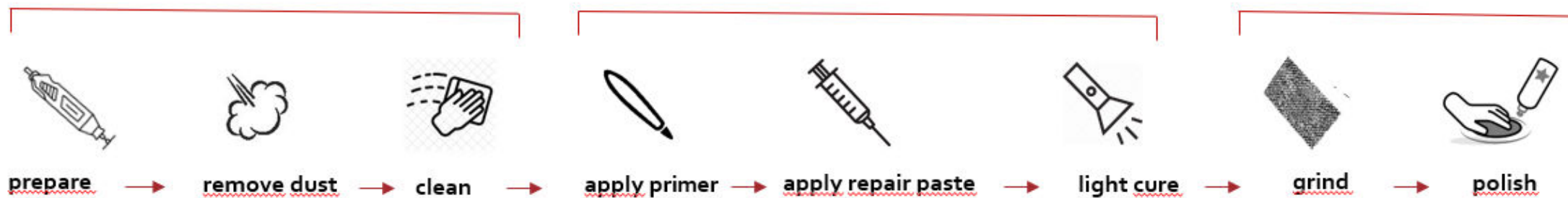
Repair Steps



Preperation

Repair

Finish



Repair techniques



- Transpa technique
suitable for small damages on lively surfaces
- Retouch technique
suitable for minor damage to vibrant surfaces
- Crystal technique
suitable for damage to monochrome, crystalline surfaces
- Structure technique
suitable for damage to textured surfaces
- Micro-defect technique
suitable for hairline cracks, preparation margins, other micro defects



Proven Quality

Proven quality



Materials Science and Technology

Weathering simulation

Fire & Ice

Colourfast in interior and outdoor application



Weathering simulation

DIN 52-104-1

frost-proof up to -20°C



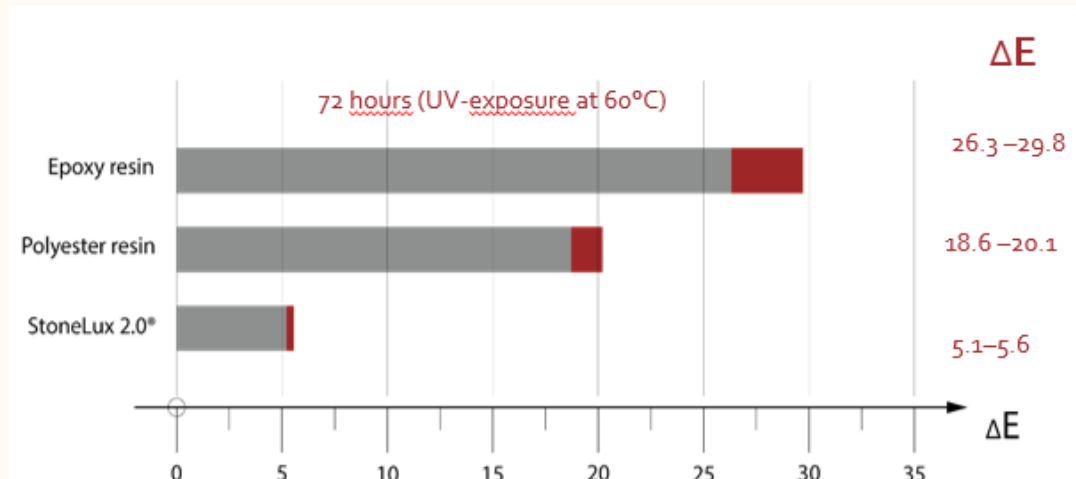
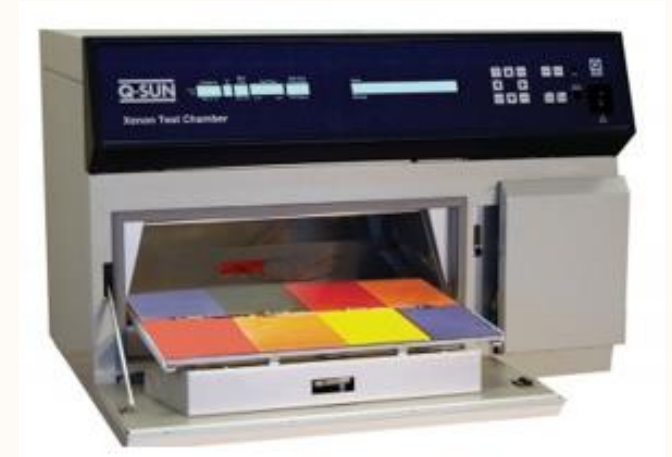
International
Organization for
Standardization

Material properties

ISO 10477

Compressive strength 3700 kg/cm²
Bond strength to stone 75 kg/cm²

Colour stability – according ISO 11664-4



Description:

< 1,0	excellent UV stability
1,0 - 2,0	outstanding UV stability
2,0 - 3,0	very good UV stability
3,0 - 5,0	good UV stability
5,0 - 8,0	moderate UV stability
8,0 - 12,0	slightly UV stability
> 12,0	insufficient UV stability



Repair Examples

Application field - granite



before

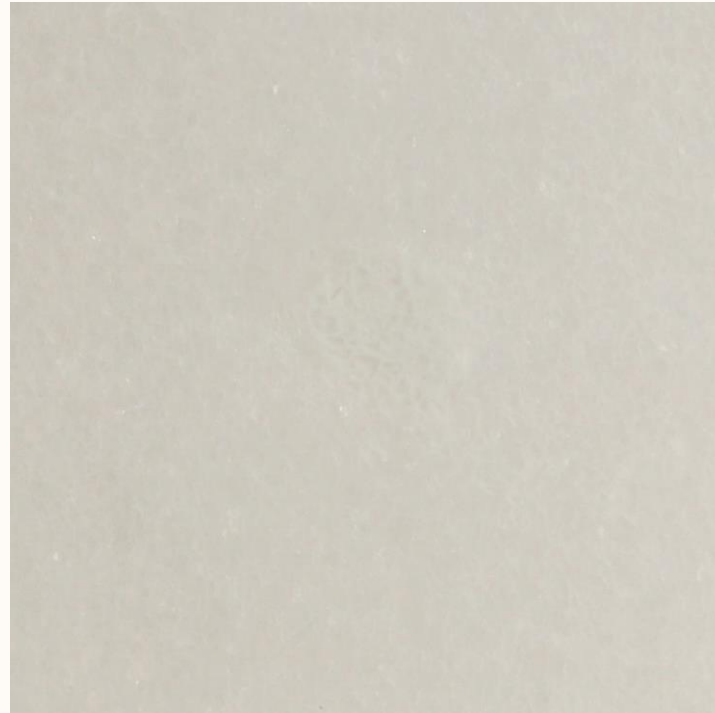


after

Application field – marble surface



before



after

Application field – sinter ceramics



before



after

Application field – edge repair „cashmere“



before



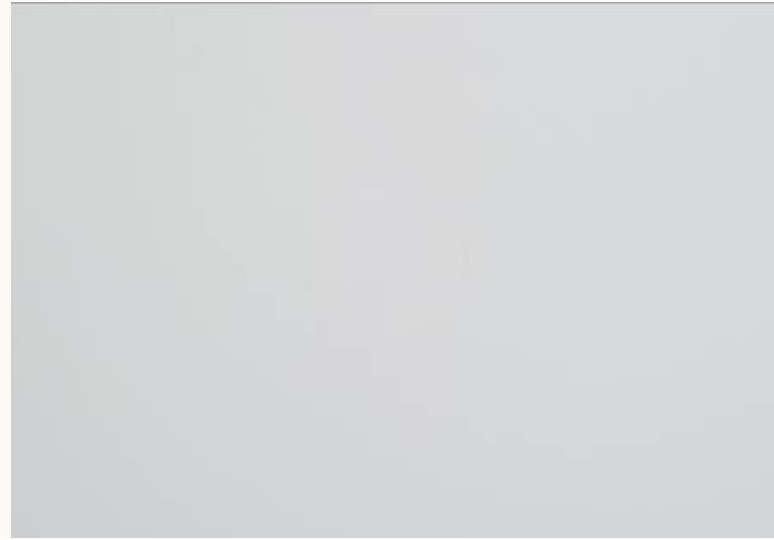
after



Application field – glazed tile



before



after

Application field – scratch remove travertine



before



after

Application field – font correction



before



after

Application field – stoneware

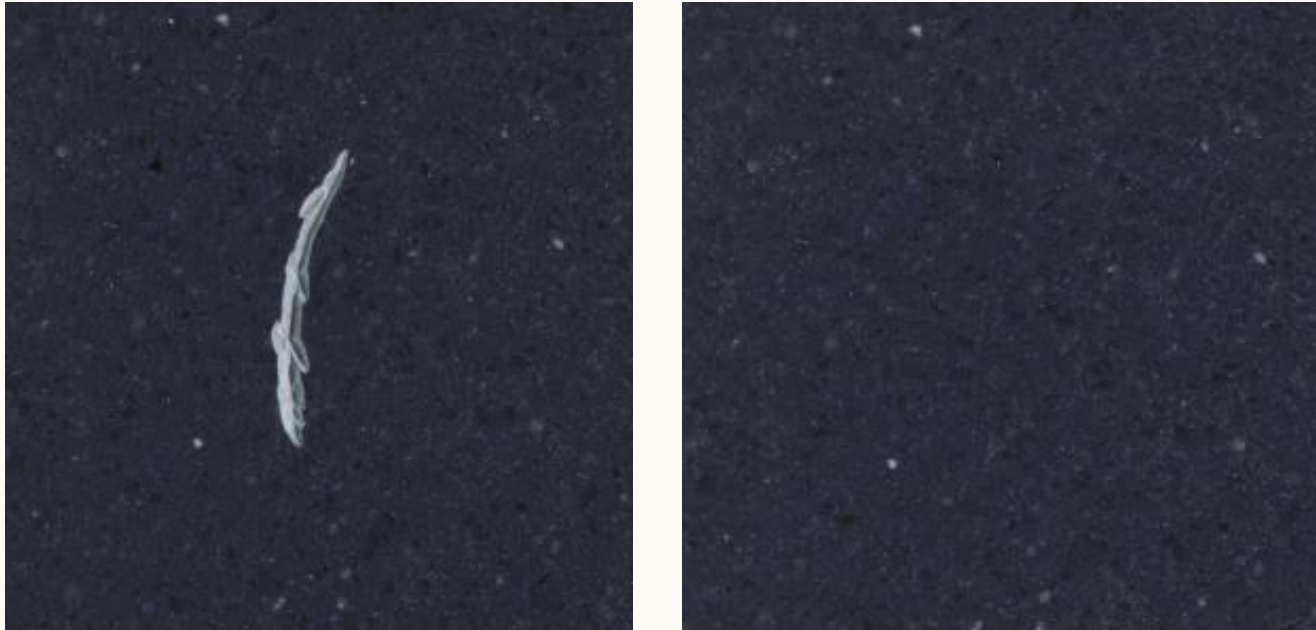


before



after

Application field – quartz composite

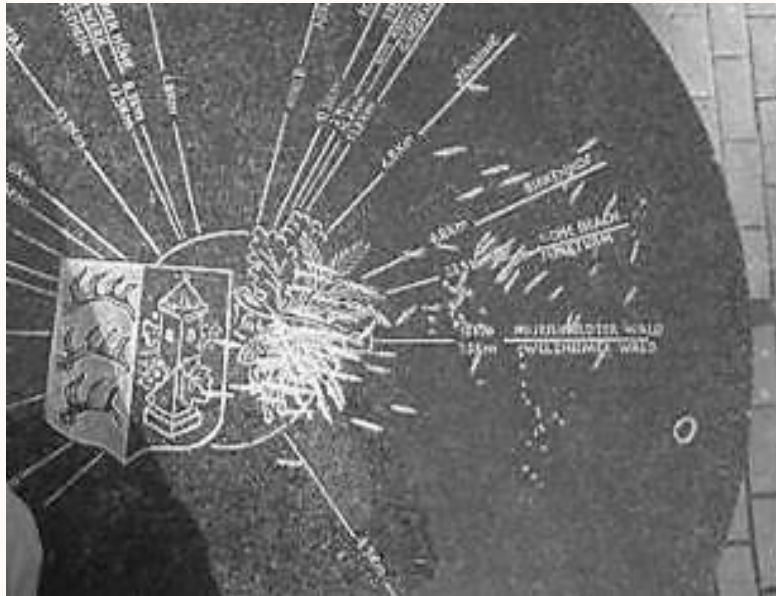


before



after

Application field – restoration



before



after



stonelux 2.0



Thank you!

invicon